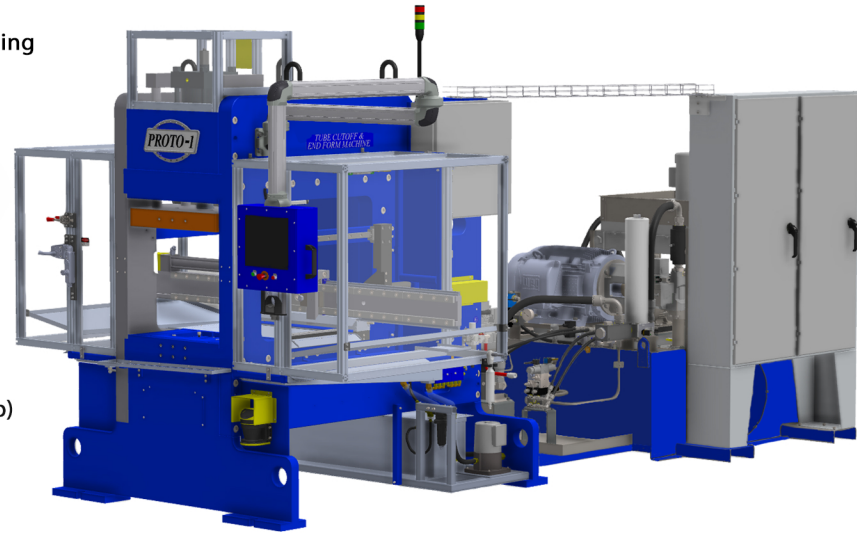


# RAM-8

Offset Expands | Coping | Piercing | Trim/Form | Tube Reducing | Bending | Swaging  
Spline | Slotting | Hole Punch | Beading | Flaring | Notching | Large Bead

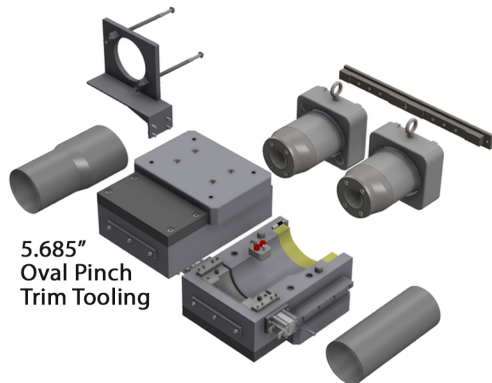
## SPECIFICATIONS

Tube Diameter:	.125" - 8.0" depending upon endform and material
Tube Wall Thickness:	.020" - .250" depending upon endform and material
Hydraulic Cylinders:	Clamp   70 ton vertical with 8" bore 16" stroke Ram   70 ton horizontal with 8" bore 14" stroke
Cycle Time:	8-30 seconds depending upon end form and material
Tooling Shuttle Bar:	7 position servo controlled shuttle ( 6 tools + 1 tube-stop)
Dimensions:	191.0" Length x 97.0" Width x 100.0" Height
Power:	480v   3 Phase   60 hz
Part/Tool Cooling:	Flood Cooling System with Drip Pans



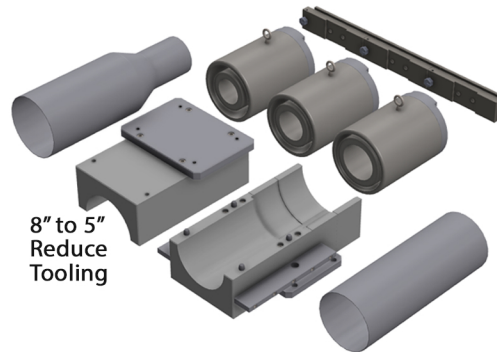
## TOOLING OPTIONS

Each production toolset is designed, manufactured, and is customized for each project made for a repeatable process.



## SAFETY & OPTIONAL FEATURES

Light Curtains | Emergency Stop  
Pneumatic Lockout | Electrical Lockout  
UL or CUL Certification | Custom Power Options  
Custom Control Options | Custom Fixture Options



## FAST TECHNOLOGY

Hydraulic Pressure Monitoring  
Speed and Feed Monitoring  
Position Monitoring  
HMI Diagnostic Monitoring

